

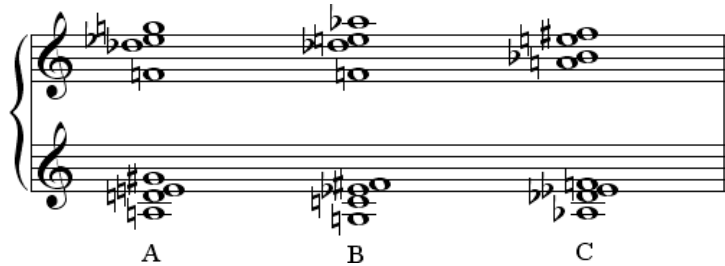
APPENDIX A:
LIST OF MESSIAEN'S MODES OF LIMITED TRANSPOSITIONS

Mode no.:	pcs of the mode:										
1 ¹ :	C	D	E	F [#]	G [#]	A [#]	F [#]	G	A [#]	B	
1 ² :	D ^b	E ^b	F	G	A	B	G	F [#]	A [#]		B ^b
2 ¹ :	C	D ^b	E ^b	F	F [#]	G	E	F	G	A [#]	B ^b
2 ² :	C [#]	D	E	F [#]	G [#]	A	F [#]	G	A [#]	B	C
2 ³ :	D	E ^b	F	F [#]	G [#]	A	F [#]	G	A	B	C [#]
3 ¹ :	C	D	E ^b	F	F [#]	G	E	F	A ^b	B ^b	B
3 ² :	D ^b	E ^b	F	F [#]	G	A ^b	E	F	A	B	C
3 ³ :	D	E	F	F [#]	G [#]	A	F [#]	G	A ^b	B	C [#]
3 ⁴ :	E ^b	F	F [#]	G	A	B ^b	F [#]	G	B	C [#]	D
4 ¹ :	C	D ^b	D	F	F [#]	G	F	F [#]	A ^b	B	
4 ² :	D ^b	D	E ^b	F	G	G [#]	F [#]	G	A	C	C [#]
4 ³ :	D	E ^b	E	F	G [#]	A	F [#]	G	A ^b	C [#]	
4 ⁴ :	E ^b	F	F [#]	G [#]	A	B ^b	F [#]	G	B	D	
4 ⁵ :	E	F	F [#]	G	A	B	F [#]	G	C	E ^b	
4 ⁶ :	F	F [#]	G	A	B	C	F [#]	G	C [#]	E	
5 ¹ :	C	D ^b	F	F [#]	G	B	F [#]	G	B		
5 ² :	D ^b	D	F	G	G [#]	C	F [#]	G	C		
5 ³ :	D	E ^b	F	G	A	C [#]	F [#]	G	C [#]		
5 ⁴ :	E ^b	F	G [#]	A	B ^b	D	F [#]	G	D		
5 ⁵ :	E	F	A	B ^b	B	C	F [#]	G	E ^b		
5 ⁶ :	F	F [#]	B ^b	B	C	E	F [#]	G	E		
6 ¹ :	C	D	E	F	F [#]	G [#]	F [#]	G	A [#]	B	
6 ² :	D ^b	E ^b	F	G ^b	A ^b	C	F [#]	G	B	C	
6 ³ :	D	E	F [#]	G	A ^b	B ^b	F [#]	G	C	D ^b	
6 ⁴ :	E ^b	F	G	A ^b	A	B	F [#]	G	C [#]	D	
6 ⁵ :	E	F [#]	G [#]	A	B ^b	C	F [#]	G	D	E ^b	
6 ⁶ :	F	G	A	B ^b	B	C [#]	F [#]	G	D [#]	E	
7 ¹ :	C	D ^b	D	E ^b	F	F [#]	F [#]	G	A ^b	B	C
7 ² :	D ^b	D	E ^b	E	F	F [#]	F [#]	G	A	B ^b	A
7 ³ :	D	E ^b	E	F	F [#]	G	F [#]	G	A	B ^b	B
7 ⁴ :	E ^b	F	F [#]	F [#]	G	A	F [#]	G	B ^b	B	C
7 ⁵ :	E	F	F [#]	G	A	B ^b	F [#]	G	B	C	C [#]
7 ⁶ :	F	F [#]	G	G [#]	A ^b	B	F [#]	G	C	C [#]	D
											B
											C
											C [#]
											D
											E ^b
											E

Messiaen Late Chord Types

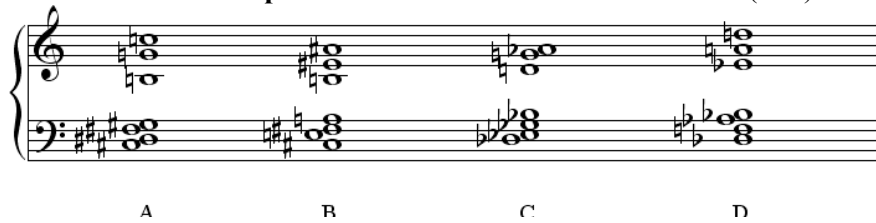
Messiaen's eighth table of the **Turning Chords** from *TRCO* Tomes III and VII (*TRCO*, Tome III, pp. 85-88):

- A: [12345789], 8-5 (01234678)
- B: [01345678], 8-4 (01234578)
- C: [1345689t], 8-14 (01245679)



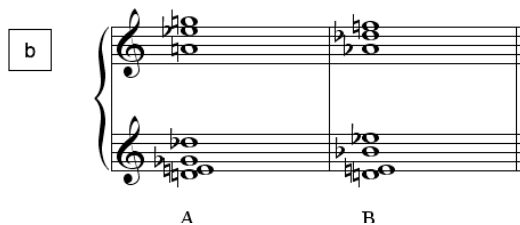
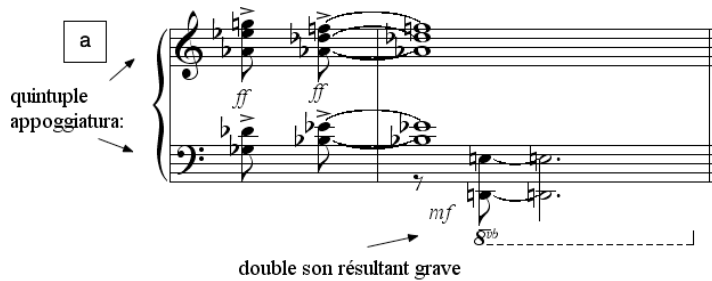
The three TC have a 'global' effect of 'pale yellow, streaked with white, black and grey, with green spots.' Yet chord A is described as 'pale yellow, mauve, – pinkish copper, pearl grey.' (*TRCO*, Tome III, p. 85)

The Chords of Transposed Inversion on the same bass note (CTI): 7-20



- A: [6,7,8,11,0,1,3], 7-20 (0125679)
- B: [4,5,6,9,10,11,1], 7-20 (0125679)
- C: [1,2,3,6,7,8,10], 7-20 (0125679)
- D: [8,9,10,1,2,3,5], 7-20 (0125679)

the **chord of contracted resonance** (CCR) (*TRCO*, Tome III, p. 87):



- A: [1,2,3,4,6,7,9], 7-z36 (0123568)
- B: [1,2,3,4,5,8,10], 7z12 (0123479)