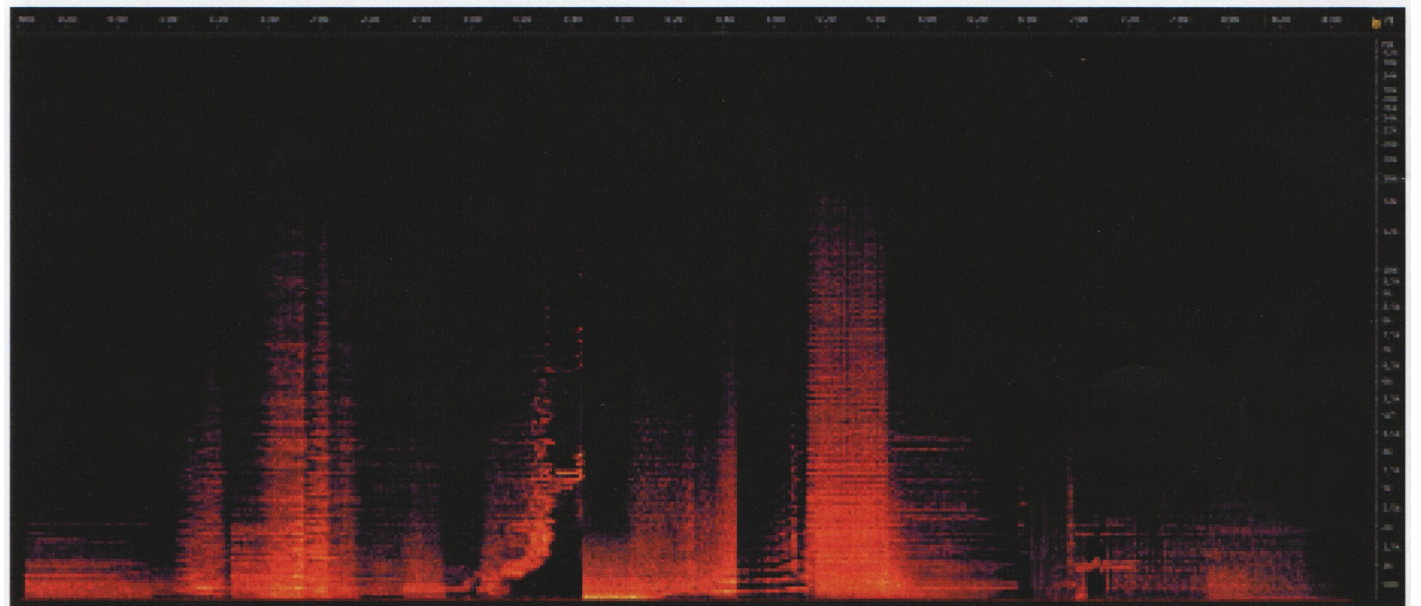
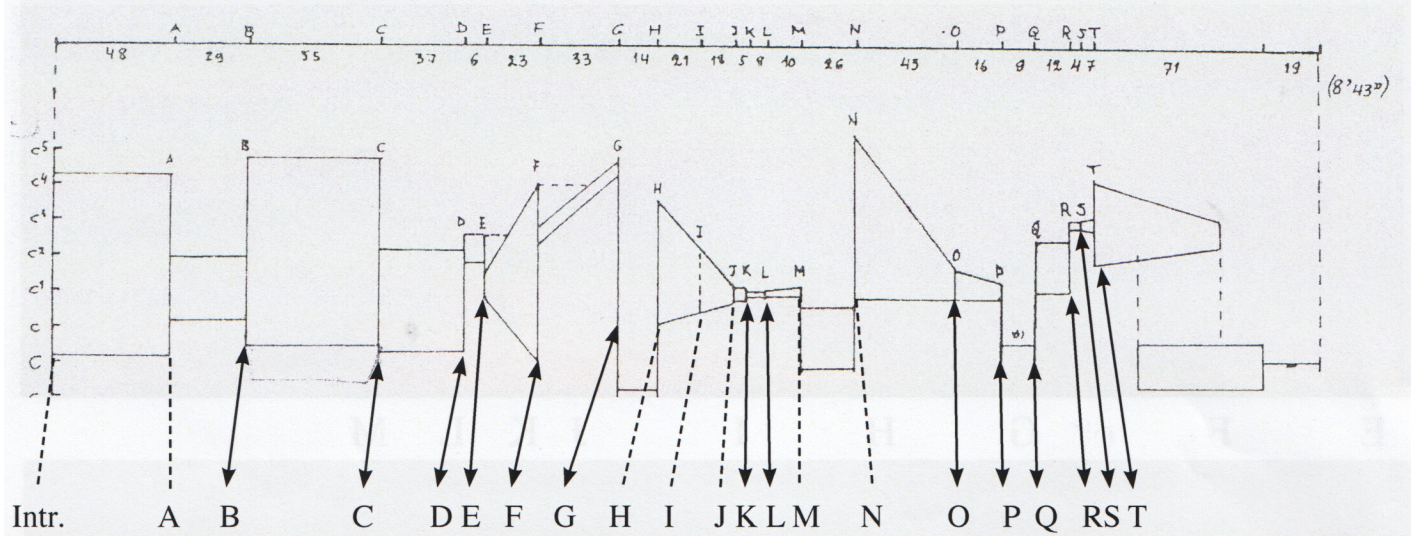


Ex. 3: Spectral Analysis

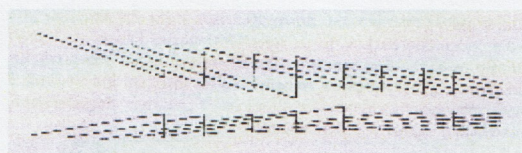
(Contour of Pitches see Erkki Salmenhaara, *Das musikalische Material und seine Behandlung in den Werken Apparitions, Atmosphères, Aventures und Requiem von György Ligeti*, Regensburg 1969, p. 86)



(Recording: Berliner Philharmoniker, Jonathan Nott, 12/2001, Teldec 8573-88261-2)

Ex. 4: Ligeti, *Atmosphères*, Polyphonic Structure of Parts H and I

(see Erkki Salmenhaara, *Das musikalische Material und seine Behandlung in den Werken Apparitions, Atmosphères, Aventures und Requiem von György Ligeti*, Regensburg 1969, p. 96)



Intr.

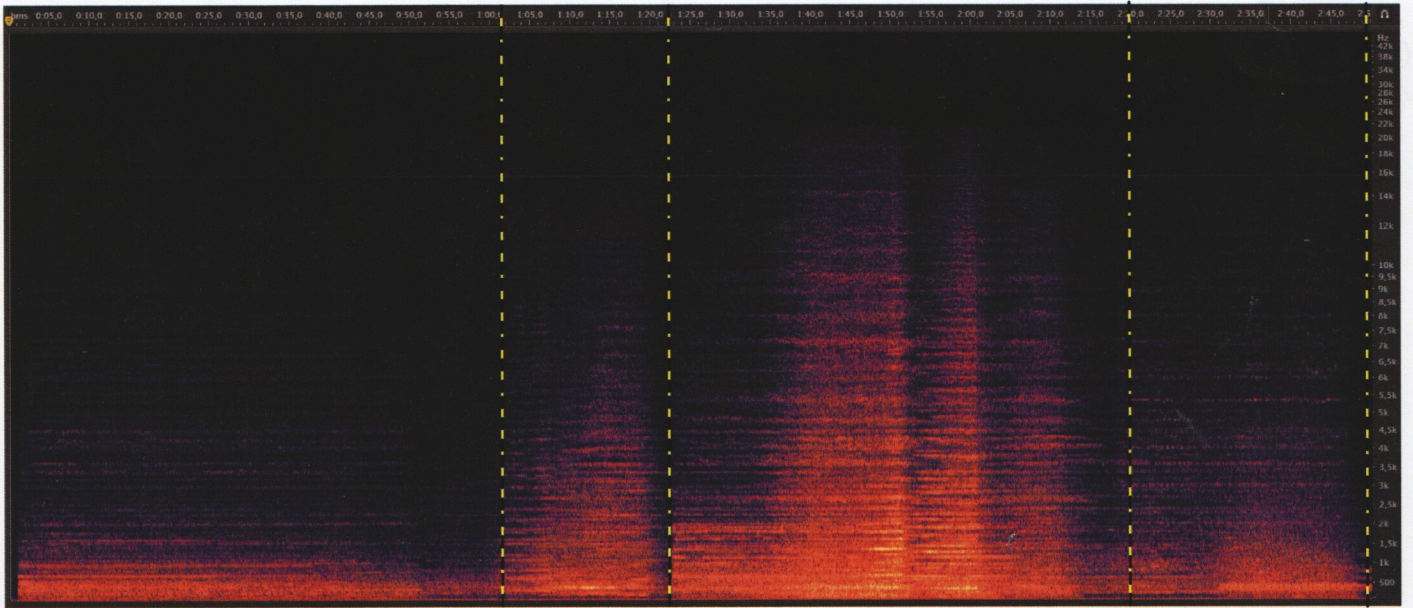
A

B

Low + 5 kb

C

D



E

F

pic

G

H

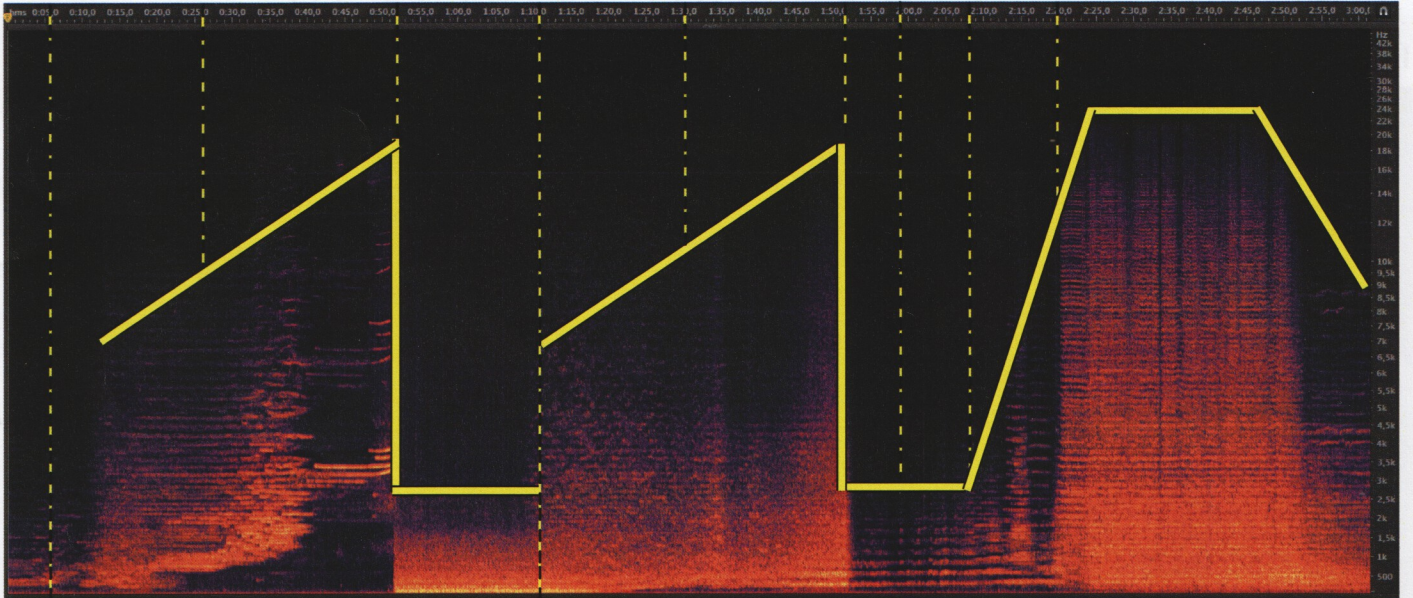
I

J

K

L

M



N

O

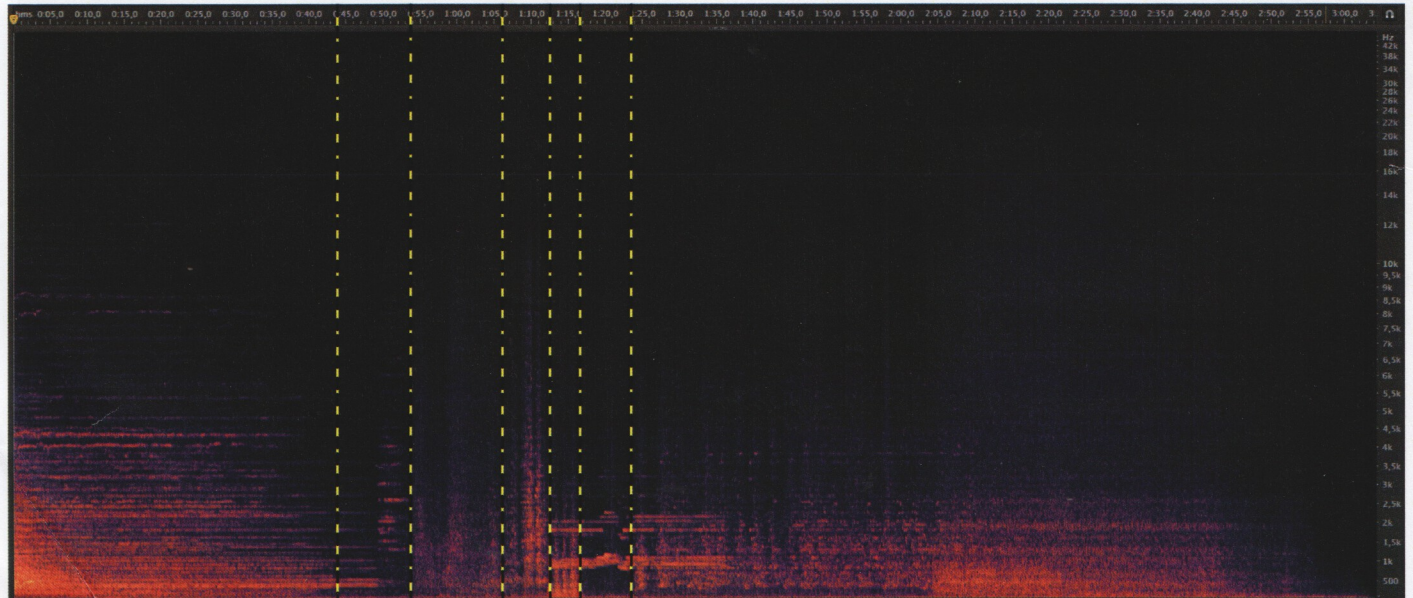
P

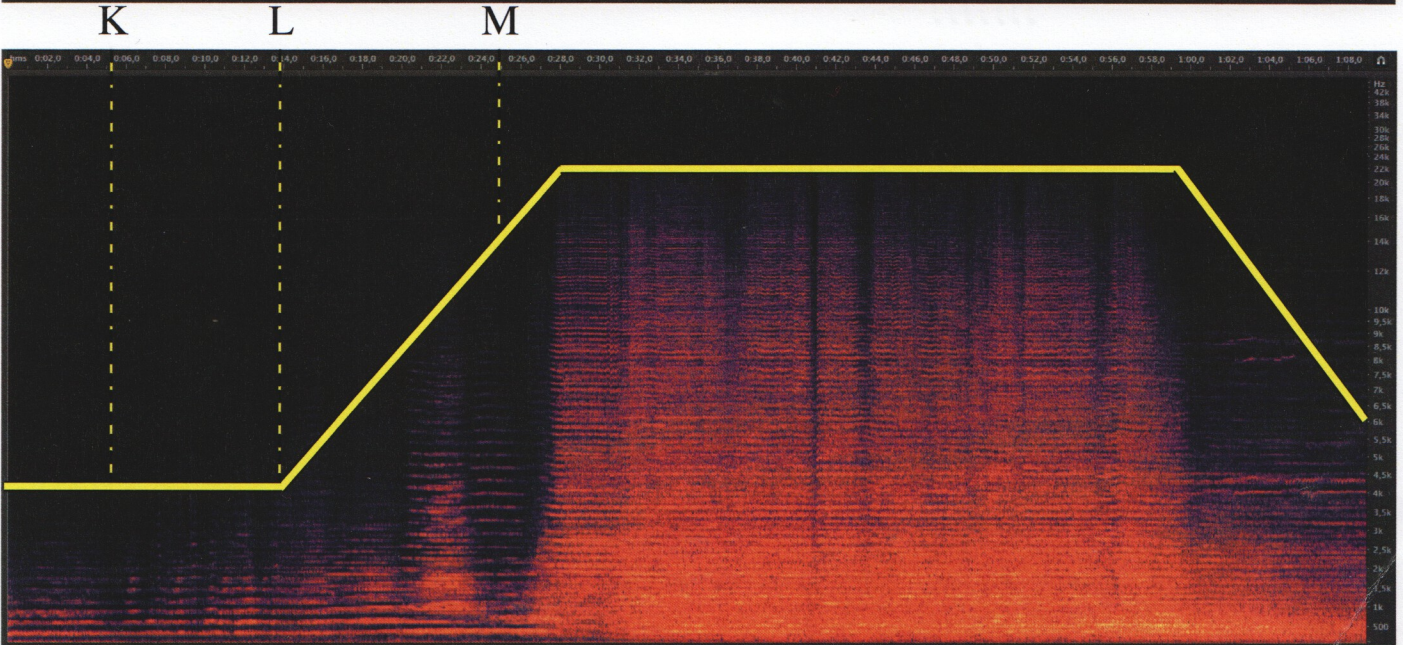
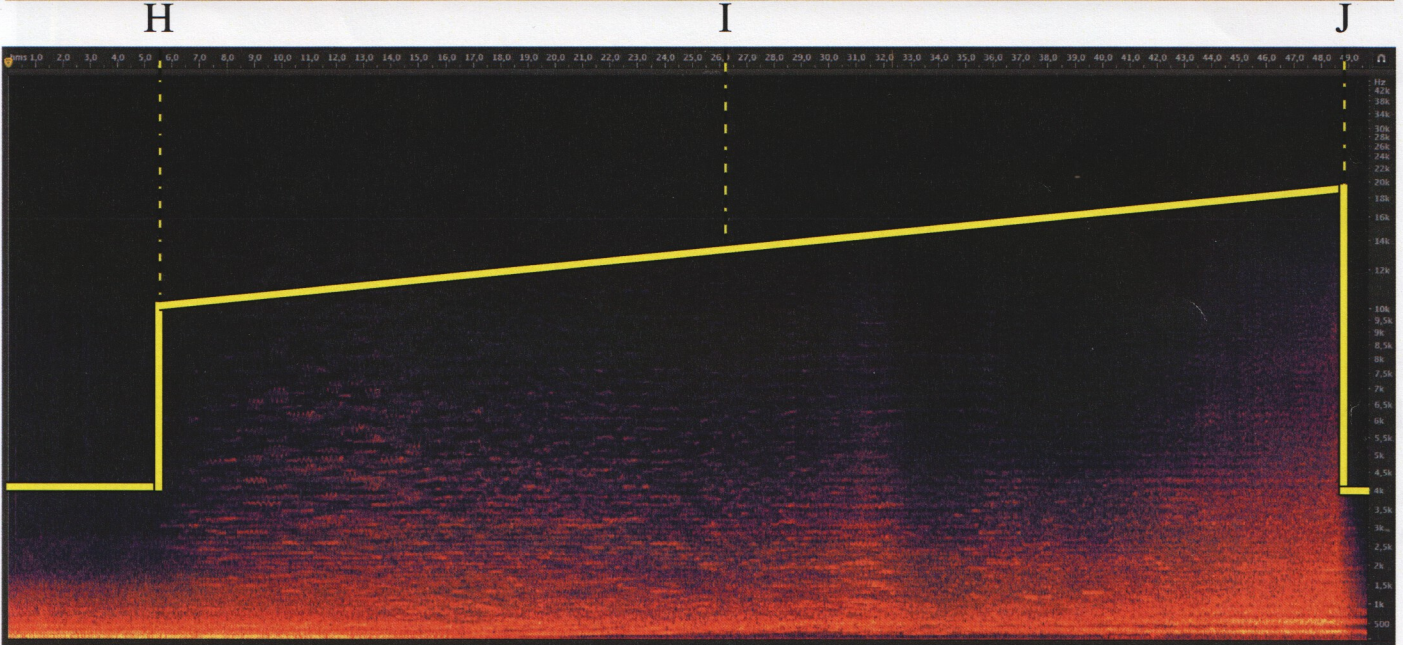
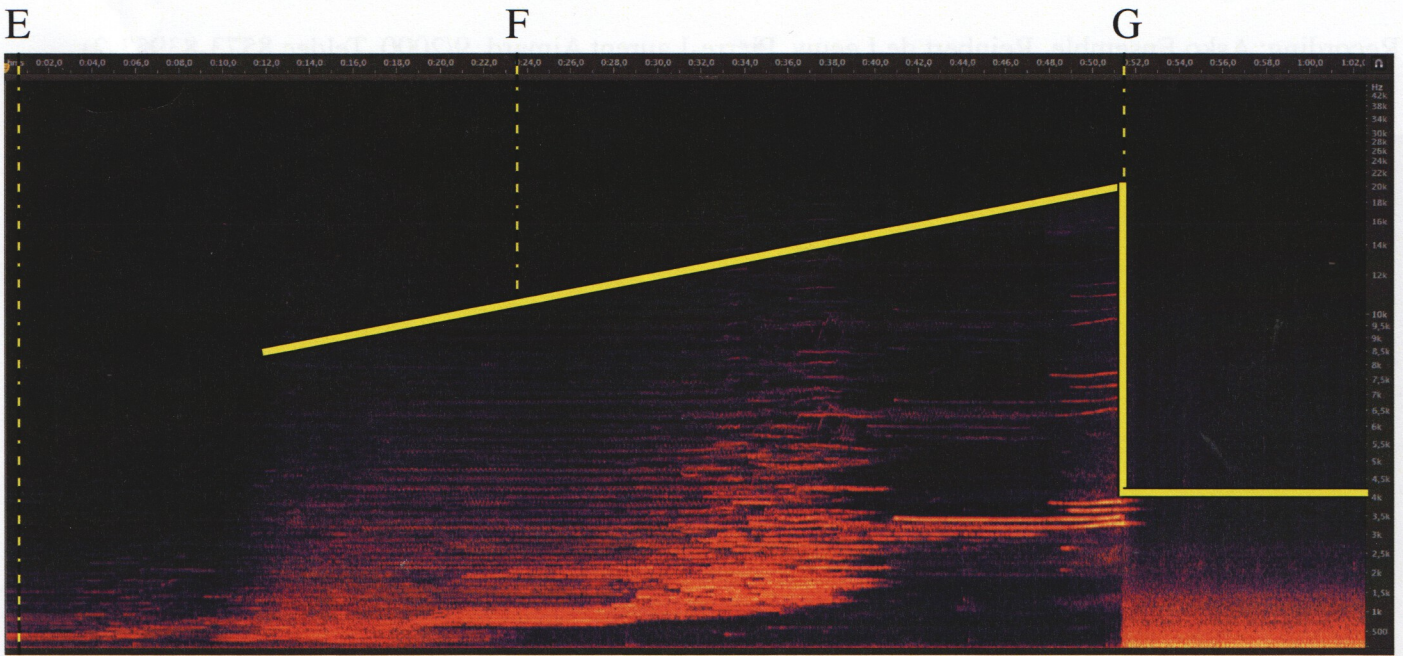
Q

R

S

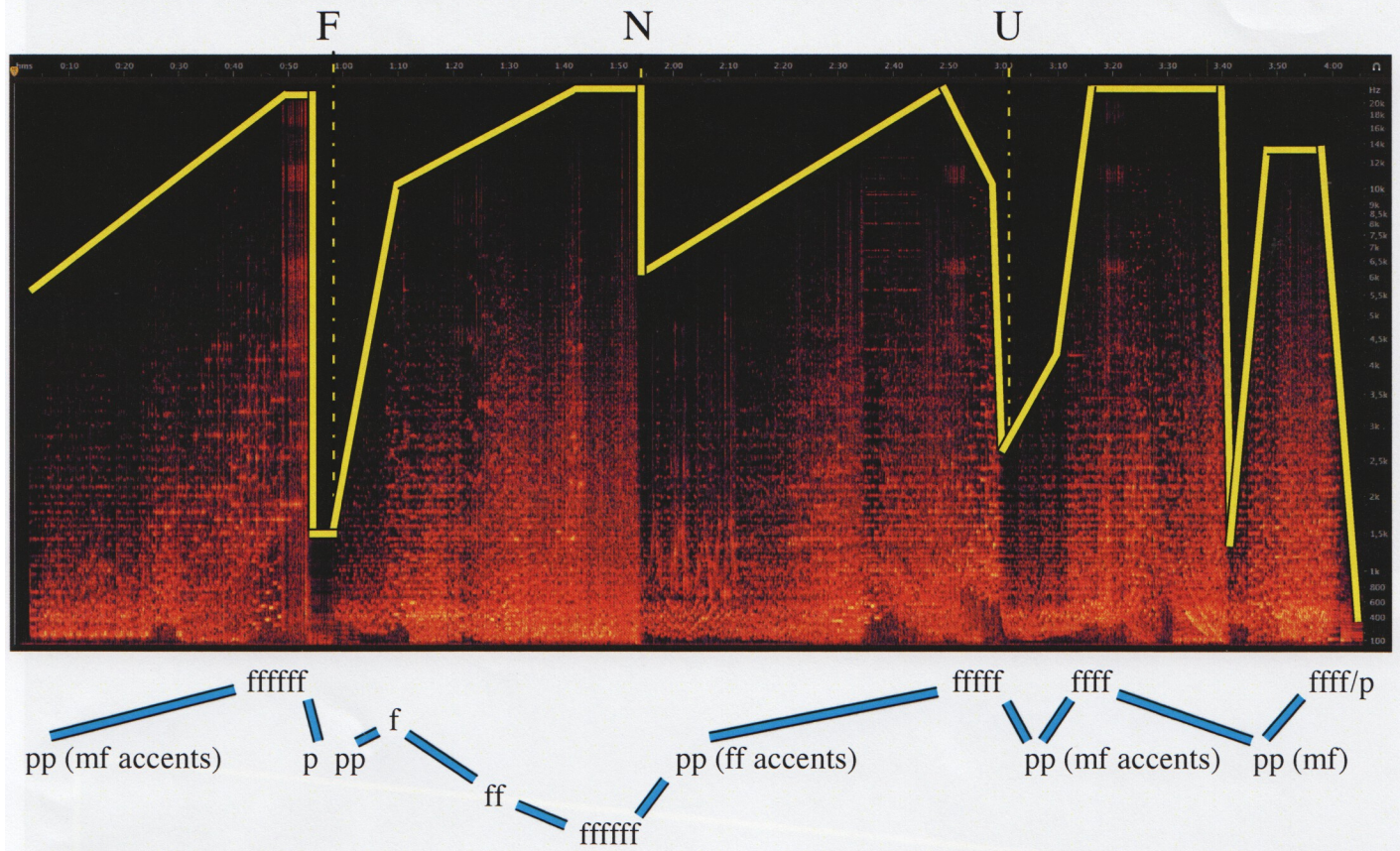
T





Spectral Analysis

(Recording: Asko Ensemble, Reinbert de Leeuw, Pierre-Laurent Aimard, 9/2000, Teldec 8573-83953-2)



Ex. 8: Ligeti, *Concerto for Piano and Orchestra*, 1st movement, Talea Structures

see Roland Willmann, *Gebannte Zeit. Studien zum Klavierkonzert György Ligetis*, Anif/Salzburg 2006, p. 28 and 29)

Talea I ($\frac{12}{8}$) :|: ... (2 2 1/2 T) :|:

Talea II ($\frac{4}{4}$) :|: ... (2 3 T) :|:

I | ... etc.

II | ...