

Handel, Leçon in B^b, Air



A musical staff in treble clef, B-flat major, common time. The piece consists of four measures of music. Each measure contains a complex rhythmic pattern of eighth and sixteenth notes, with many stems and slurs. There are four double bar lines, one at the end of each measure. The final measure ends with a double bar line and a 12/8 time signature.

Var. 3



A musical staff in treble clef, B-flat major, 12/8 time. The piece consists of four measures of music. Each measure contains a simple rhythmic pattern of eighth notes, with stems and slurs. There are four double bar lines, one at the end of each measure.

Rhythmic reduction



An empty musical staff in treble clef, B-flat major, common time. The staff is divided into four measures by vertical bar lines.

Stems and slurs



An empty musical staff in treble clef, B-flat major, common time. The staff is divided into four measures by vertical bar lines.

Further reduction



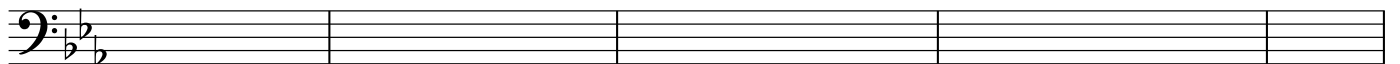
An empty musical staff in treble clef, B-flat major, common time. The staff is divided into four measures by vertical bar lines. The final measure ends with a common time signature.

Bach, Cello Ste in c minor, Gavotte II



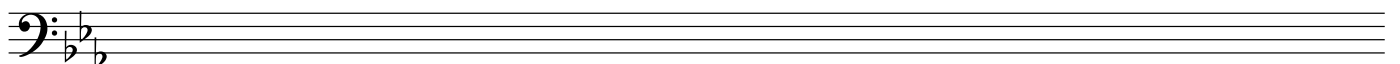
A musical staff in bass clef, C minor, common time. The piece consists of four measures of music. Each measure contains a complex rhythmic pattern of eighth and sixteenth notes, with many stems and slurs. There are four double bar lines, one at the end of each measure.

Rhythmic reduction



An empty musical staff in bass clef, C minor, common time. The staff is divided into four measures by vertical bar lines.

Stems and slurs



An empty musical staff in bass clef, C minor, common time. The staff is divided into four measures by vertical bar lines.

Diminution worksheet

Identify melodic embellishments and create a rhythmic reduction Mozart Piano Sonata K. 457a, I

Musical score for Mozart Piano Sonata K. 457a, I, measures 1-4. The score is in 3/4 time and B-flat major. The right hand features a melodic line with a grace note and a slur over measures 1 and 2, followed by a triplet in measure 3. The left hand provides a harmonic accompaniment with chords and rests.

Empty musical staves for the first exercise, consisting of a grand staff with treble and bass clefs, a key signature of two flats, and a common time signature.

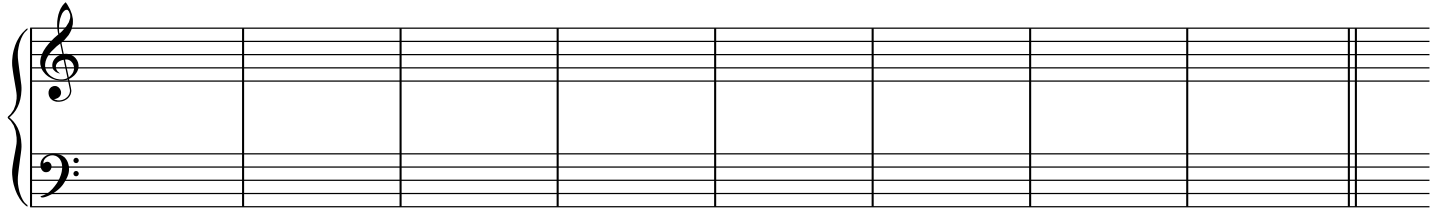
Mozart Trio Bb Major K. 502

Musical score for Mozart Trio Bb Major K. 502, measures 1-4. The score is in common time and B-flat major. The right hand features a melodic line with a grace note and a slur over measures 1 and 2, followed by a triplet in measure 3. The left hand provides a harmonic accompaniment with chords and rests.

Empty musical staves for the second exercise, consisting of a grand staff with treble and bass clefs, a key signature of two flats, and a common time signature.

Haydn Piano Sonata in C Major No. 5

Musical score for Haydn Piano Sonata in C Major No. 5, measures 1-4. The score is in 3/4 time and C major. The right hand features a melodic line with a grace note and a slur over measures 1 and 2, followed by a triplet in measure 3. The left hand provides a harmonic accompaniment with chords and rests.



Schubert, Impromptu D 935

